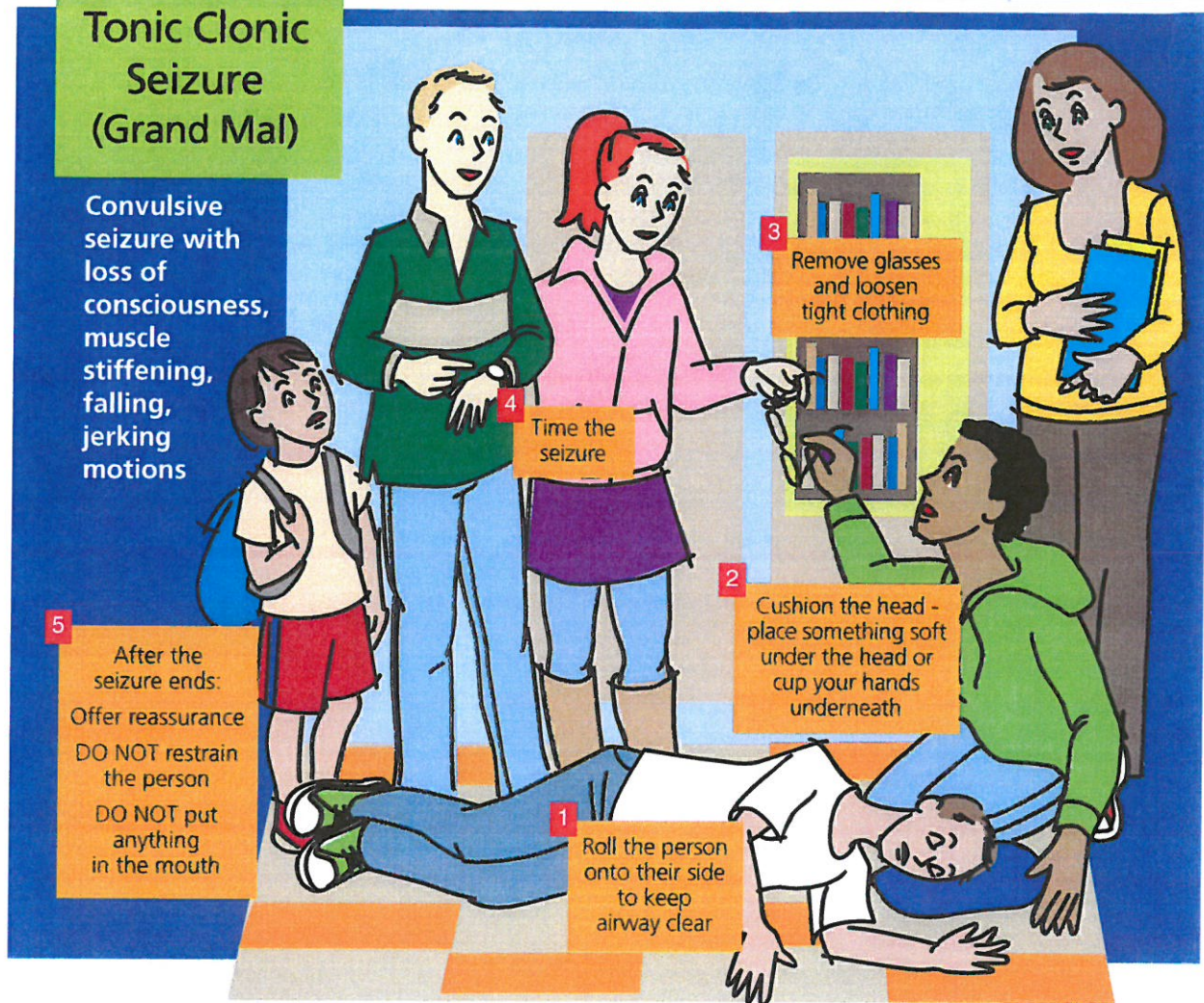


Seizure First Aid

Tonic Clonic Seizure (Grand Mal)

Convulsive seizure with loss of consciousness, muscle stiffening, falling, jerking motions



Complex Partial Seizure

Non-convulsive seizure with signs of confusion, unresponsiveness or inappropriate behavior. Altered consciousness and total loss of awareness. May be mistaken for alcohol or drug intoxication.

- DO NOT restrain the person
- Gently guide from behind
- Time the seizure
- After the seizure ends, offer reassurance

When to call 911:

You know, or believe it to be, the person's first seizure

If the seizure lasts more than 5 minutes

You feel uncomfortable dealing with the situation

If the person is injured



Epilepsy Foundation of Minnesota

1600 University Avenue West, Suite 300 | St. Paul, MN 55104
Phone 1.800.779.0777 | 651.287.2300 | efmn.org

This information is made available as a guide only on the understanding that the Epilepsy Foundation of Minnesota shall have no liability by reason of any person using or relying on this information.